

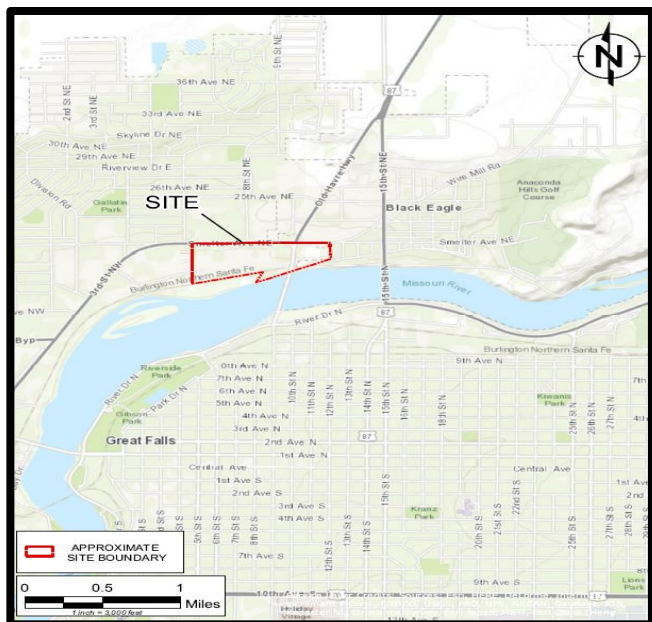
September 2019

Great Falls, Montana

CMR is providing this fact sheet to explain remediation activities at the Site, but it is not a technical document.

Introduction

The purpose of this Fact Sheet is to provide an update to the general public and local residents that live near the Calumet Montana Refinery, LLC (CMR) located at 1900 10th Street N.E. Great Falls, Montana (as shown below). Current status and planned remediation activities at the Site are described in this Fact Sheet.



Site History

The Site has operated as a refinery since 1922 under numerous owner/operators. CMR acquired the refinery in 2012 and currently produce approximately 25,000 barrels a day of various petroleum products. The Site occupies approximately 56-acres on the north side of the Missouri River.

Between 1979 to 1985 a land treatment unit (LTU) was operated at the Site to treat petroleum impacted wastes. The LTU was considered a regulated unit under the Montana Hazardous Waste Act and federal Resource Conservation and Recovery Act (RCRA) and a hazardous waste permit was required.

The facility was issued hazardous waste permit MTHWP-95-02 on September 22, 1995. The permit was issued jointly by the Montana Department of Environmental Quality (MDEQ) and the United States

Environmental Protection Agency (USEPA) and included requirements for post-closure care of the LTU and for facility-wide corrective action.

In September 2012, hazardous waste permit MTHW-95-02 was terminated and a Corrective Action Order on Consent (Order) was issued by MDEQ to oversee the clean-up of the Site.

Corrective Action

As part of the facility-wide corrective action, CMR is required to clean-up contaminated soil and groundwater at the Site. Specific areas have been identified as having contaminated soil and/or groundwater. Recently, CMR with MDEQ's support has completed the following activities in relation to the corrective action:

- From February 2014 to August 2015, approximately 94,400 tons of hazardous and non-hazardous soils were excavated and transported to an off-site disposal area as part of Lead Consolidation Area (LCA) Interim Measure (IM) work activities.
- In October 2018, CMR initiated the lining of a Storm Sewer and associated manholes which transected the centre of the refinery to prevent intrusion of petroleum constituents into the storm sewer pipe and prevent migration of petroleum constituents to the Missouri River.
- In March 2019, CMR initiated a two-year quarterly groundwater monitoring effort throughout the Site to document the current impact of petroleum constituents to Site groundwater.
- In April 2019, CMR initiated additional soil and groundwater IM investigative activities of the West Rail Loading Rack and the East Rail Loading Rack. A collective Rail Investigative Area IM Field Investigation Report with an updated Site Conceptual Model is due to be submitted to MDEQ at the end of September 2019.
- In July 2019, CMR began conducting a Human Health Risk Assessment (HHRA) of the Old Pondered Area. The HHRA report is due to be submitted to MDEQ at the end of September 2019. The purpose of the HHRA is to determine whether any additional response actions of this area will be necessary.

- In August 2019, CMR initiated IM design activities for the Gasoline and Light Oil Loading Rack (Truck Loading Rack). Design activities will include conducting soil vapor extraction (SVE), air sparge (AS), and bio sparge (BS) pilot tests. IM remedial actions will be conducted along the southern boundary of the Truck Loading Rack and along the north side of River Road. Pilot test activities will be conducted in the fall of 2019 and the design is targeted for completion by Spring 2020. The IM remedy will address petroleum contaminants related to hydrocarbon spills which occurred in the area between 1995 and 2011.



Future Activities

CMR will conduct the following activities to continue to address corrective actions as part of the Order.

- Continue the two-year quarterly Site-wide groundwater monitoring through the end of 2020.
- Complete the IM Field Investigation Report and undertake, as necessary, IM remedy evaluation(s) for the West Rail Loading Rack and the East Rail Loading Rack.
- Complete the Old Poned Area HHRA and undertake, as necessary, an IM remedy evaluation.
- Design, construct, and operate the Truck Loading Rack IM remedy to contain and reduce soil and groundwater impacts.
- Work with MDEQ and USEPA in assessing a path forward to undertake a RCRA Facility Inspection (RFI) through a third-party optimization review.



Community Involvement

Throughout the IM and upcoming RFI process, CMR will keep the public informed through Fact Sheets, press releases, meetings and other appropriate activities. The general public and local residents are encouraged to ask questions regarding the information CMR provides.

Information Repository

An information repository has been established to store publicly available documents related to recent corrective action activities. The Information Repository can be found at www.CMRsite.com/repository.

For More Information

Additional and up to date information for the CMR Site can be found at www.CMRsite.com.

If you have questions or need more information, please contact the following CMR or MDEQ representatives:

Mr. Joe Dauner
Environmental Manager
Calumet Montana Refinery
1900 10th Street NE
Great Falls, MT 59404
Phone: (406) 454-9887
Email: joseph.dauner@calumetspecialty.com

Mr. David T. Heidlauf, CPG
Principal Environmental Consultant
Ramboll America
333 West Wacker Drive, Suite 2700
Chicago, IL 60606
Phone: (312) 288-3823
Email: dheidlauf@ramboll.com

Ms. Denise A. Kirkpatrick
Hazardous Waste Specialist
Montana Department of Environmental Quality
Waste and Underground Tank Management Bureau
P.O. Box 200901
Helena, MT 59620-0901
Phone: (406) 444-3983
Email: dkirkpatrick@mt.gov